

## Melburnian of the Year

Professor Sharon Lewin - inaugural Director of the Doherty, leading HIV scientist and Melburnian



Despite the extraordinary advances of the 20th century, old and new infectious diseases remain a major cause of morbidity and mortality worldwide. The Doherty Institute is a joint venture of the University of Melbourne and Melbourne Health (The Royal Melbourne Hospital). Our vision is to be the world leader in responding to and managing infectious diseases.

**- Professor Sharon Lewin**  
**Director, Doherty Institute for Infection and Immunity**



(<https://twitter.com/thedohertyinst>)

## Social

(<https://twitter.com/thedohertyinst>)

Follow us on Twitter

([@TheDohertyInst](https://twitter.com/thedohertyinst))

(<https://twitter.com/thedohertyinst>)

#DohertyInstitute

#TheDoherty

## Twitter

Approx 71% of salmonella cases are food borne in Australia #dohertyseminar @KirkMartyn

Vehicle  
chicker  
endles!

## Vision and key ideas

A world-class institute combining research into infectious disease and immunity with teaching excellence.

# The Doherty Institute for Infection and Immunity

"... detect, investigate and respond to known and emerging infectious diseases ..."

**The Doherty Institute for Infection and Immunity**

# The Parkville Precinct: a powerhouse of 10,000 minds

"... transforming the ability of scientists and clinicians to conduct research ..."

**The Parkville Precinct: a powerhouse of 10,000 minds**

# Peter Doherty

"... 1996 Nobel prize winner; 1997  
Australian of the Year ..."

# Peter Doherty

# Bridging the gap in the control of infectious disease

"... develop and test the vaccines and therapies of the future ..."

**Bridging the gap in the control of infectious disease**

# Media

"...research informing public debate and clinical practice..."

## **Media**

Media coverage and releases

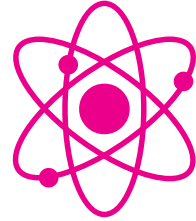


# From bench to bedside

"... publishing results in scientific journals, setting industry standards and guiding policy ..."

**Latest Publications: August 2015**

Great advances in science and medicine need teamwork. Collaboration is at the heart of the Doherty: working with the best people, using the best technology. All of the Doherty's researchers are top-level investigators who are collaborating with the best across the city, country and world.



## Themes

The Doherty is working across the spectrum of biomedical science, public health, population and clinical science responding to known and emerging infectious diseases with the overall goal to develop and test novel vaccines and treatments.

# New vaccines, treatments and diagnostics

"... The Doherty Institute is tackling some of the major communicable disease threats of our time ..."

**New vaccines, treatments and diagnostics**

There are 35 million people infected with HIV.

"... strategies are needed to prevent, treat and ultimately cure HIV infection ..."

**Contact**

Doherty-reception@unimelb.edu.au (mailto:Doherty-reception@unimelb.edu.au)  
(+61 3) 9035 3555



Viral hepatitis is a major public health issue.

"... there are over 450,000 Australians living with hepatitis B and C ..."

## **Hepatitis viruses**

**Influenza viruses cause many deaths and much illness in the community.**

**"... tackling the challenges of seasonal and pandemic influenza ..."**

# Influenza

Tuberculosis remains amongst the most significant causes of death and disability.

"... eliminating TB as a public health issue by 2050 ..."

## **Tuberculosis**



# Major research projects in enteric infection.

"... better treatments and vaccines to prevent these infections ..."

## **Enteric infections**

# Hospital-acquired infections

"... in Australia there are over 200,000 healthcare-associated infections annually ..."

## **Hospital-acquired infections**

**Antimicrobial resistance is recognised as a global threat to human health.**

**"... “super bugs” pose challenges in community and hospital settings ..."**

# Antimicrobial resistance

# Mechanisms of infection, disease and immunity

"... eliminate the infection and develop immunological memory, the basis of successful vaccination ..."

## **Understanding the immune system**

# Public health

"... Australia's leading infectious disease reference and public health laboratory ..."

## **Public Health**

## Latest Science

"... amazing images produced at the Doherty such as this crystal structure of flu ..."

### **Latest Science: Navigating Immunity**

Decoding *Klebsiella pneumoniae* (KP)

"... the sky is the limit for ideas and innovation at the Doherty ..."

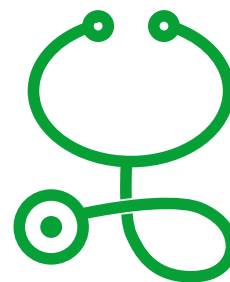
Creative connections between different disciplines

**Latest Grants**

August 2015



The Doherty is a state-of-the-art building that is more than just bricks and mortar. Within the building are experts across disciplines in many aspects of infection and immunity. The Doherty connects people and ideas, with an ambition to better inform policies and practices while improving the quality of clinical care.



## **Who's who**

More than 700 people make up the human infrastructure at the Doherty... meet some of the team here.

# Solid foundations

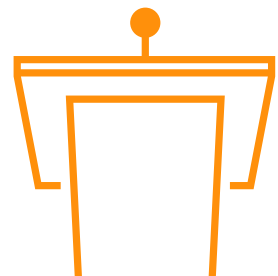
"... standing on the shoulders of giants,  
there is a grand vision for the Doherty ..."

## **Message from the Director: August 2015**

Our year so far

## **Profile: Meet Associate Professor Ben Cowie**

The Doherty is a hub for seminars, conferences and events across all aspects of infection and immunity. National and world leaders in their field come to the Doherty. Updates from these events occur on social media - everyone can join in the conversation.



## Events

Since it's official launch on the 12th September 2014, the Doherty has hosted several major national and international events. Some of the highlights are outlined here.

## Innovation and collaboration

"... international collaboration and new partnerships makes for the best possible results ..."

# **Latest Events**

## December 2014

"... linking science with better policies and quality of care starts with a conversation ..."

Engaging media to inform public debate

## **Doherty in the News**

August 2015

Issues of major significance are discussed in the corridors of the Doherty. We invite you to join the conversation.



### **Contact**

Get in touch with the Doherty

# Connect to the Peter Doherty Institute Intranet

Log in to the intranet

(<http://doherty.unimelb.edu.au/intranet/>)

## **Enquire**

Questions or comments? Our contact form is the best way to get in touch with us

First Name	*
Last Name	*
Email	*
Enquiry	*

Submit

## Contact

### Reception

The Peter Doherty Institute for Infection and Immunity  
Doherty-reception@unimelb.edu.au (/cdn-cgi/l/email-protection#98dcf7f0fdeaec1b5eafdfbfde8ecf1f7f6d8edf6f1f5fdf4fab6fdfcedb6f9ed)  
(+61 3) 9035 3555

### Media

Doherty-media@unimelb.edu.au (/cdn-cgi/l/email-protection#33775c5b5641474a1e5e56575a5273465d5a5e565f511d5657461d5246)  
(/cdn-cgi/l/email-protection#9df1e8fee4b3eee9fcfef6edf2f2f1f0f2f2eff8dde8f3f4f0f8f1ffb3f8f9e8b3fce8)(+61 3)  
8344 3377  
(+61) 466 451 515

### Street address

792 Elizabeth St  
Melbourne, 3000

View the street map (<https://goo.gl/maps/G4RH0>)

**Facebook:** The Doherty Institute (<https://www.facebook.com/DohertyInstitute>)

**Twitter:** @TheDohertyInst (<https://twitter.com/TheDohertyInst>)



#TheDoherty #DohertyInstitute

Instagram: @DohertyInstitute (<http://instagram.com/DohertyInstitute>)  
#TheDoherty #DohertyInstitute

## Partners



(<http://www.unimelb.edu.au>)

(<http://www.rmh.mh.org.au>)

